

coolrooms & freezer rooms



What is the Matrix II System?



Matrix II is an innovative modular coolroom and freezer room system being the result of a significant research effort involving professional refrigeration experts from several countries.

It offers practical and professional solutions to the conservation and storage needs of hotels, restaurants, catering companies, shops and industrial kitchens.

The **Matrix II** range was developed to combine:

- Aesthetics and quality
- Ease of transport and assembly
- Economical price and low energy consumption
- Easy maintenance
- Energy saving panels (polyurethane)



Modular



Environment and Service

Matrix II is manufactured from environmentally friendly materials using cutting edge machinery that ensures permanent levels of quality. Panels are packed flat ready for shipping and assembly.

Technical data sheets, which provide full information on all of our products, are available to our customers. If you require information, please consult our technical services department

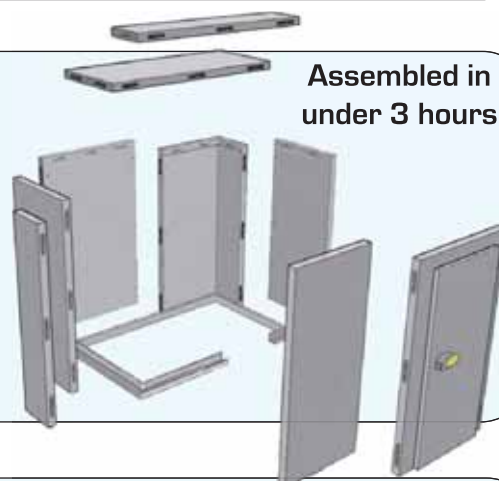
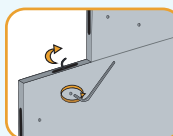


Assembly + Disassembly

Our coolrooms and freezer rooms are assembled from the inside, allowing you to take maximum advantage of the available space and height.

The 85cm wall and roof modules clip together. Assembly time is reduced and manpower is kept to a minimum.

The modules are assembled with cam locks consisting of an anticorrosion cam and pin, mounted on a highly resistant resin box, allowing a quick and easy assembly, avoiding the need to do any cutting



Assembled in under 3 hours

Panels and Doors

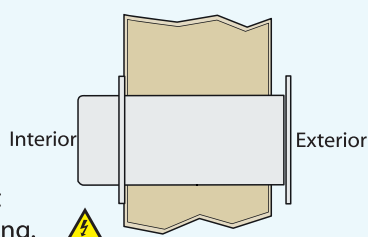
The panels and doors of the entire Matrix II System is manufactured in the same way as the panels. The outer face is galvanised sheet steel lacquered in 0.5mm (white, reference 1006, similar to RAL 9002.) Between the two steel plates, a rigid **polyurethane** foam is injected with a 40 W-2 kg/ m density and a 85mm thickness, free from CFCs and HCFCs. During manufacture, reinforced plastic casings are fitted for assembly with the vertical and floor panels.

Doors pre-assembled

Pressure Balancing Valve (for negative temperature rooms)

A difference in the interior and exterior temperatures of the coolroom causes a vacuum effect, making it difficult to open the door.

The pressure balancing valve equalises these pressures, and removes the vacuum effect for easy door opening and closing.



Heated Door Frame (for negative temperature rooms)

To prevent frosting around the door seals, the Matrix II freezer room comes standard with a heating circuit around the door frame, ensuring easy opening and closing.



NB: Contains electric 240volt heating element that must be connected by a licenced contractor



Matrix II Modular Coolroom WITHOUT FLOOR



The Matrix II Cool room is ideal for small and large spaces and is the perfect solution when a refrigerator is no longer enough. Extremely efficient and versatile.

Door

- High density 85mm polyurethane insulated door
- Wide door opening for easy access (door opening 1900mm x 800mm)
- Standard Right hinge. Reversible. Lift up hinge.

General Room Information

- Matrix II without floor can be used for coolroom only (positive temperature)
- Modules are fixed together with cam locks - no need to cut/screw or glue panels together
- Cam locks are protected against corrosion and secured inside high resistance pvc boxes
- Quick and easy assembly or dismantling if relocating with internal coving for easy cleaning
- Audible bell included
- White powder coated galvanised steel cladding is used on the vertical walls and roof
- 85mm Polyurethane panels

Floor

- Utilises existing room floor (ensure floor is level)
- Supplied with U-channel for sealing
- All you require is a flat, solid level surface
- Coving included

Optional extras (POA)

- Choice of Chiller refrigeration system - see page 50
- Shelving - see page 53
- Strip curtain (Product Code: 3735560)
- Installation (POA)



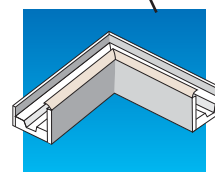
Hinge mechanism
(left opening)



Inside Latch



Inside safety latch



U-Channel supplied
for floor sealing



Outside latch and lock

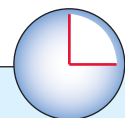


These rooms are
not designed
to be installed
outdoors



PORTABLE RELOCATEABLE

These rooms can be
quickly and simply
disassembled for
transportation to
another location

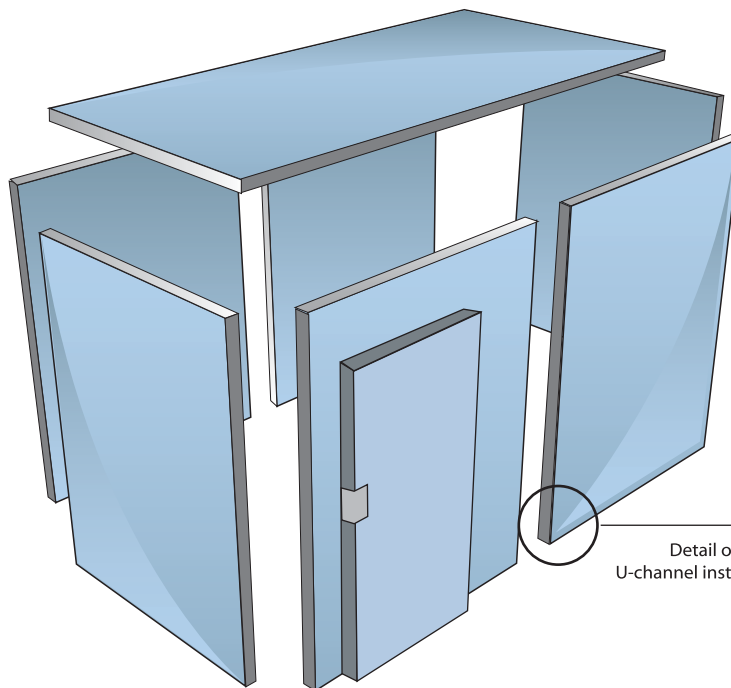
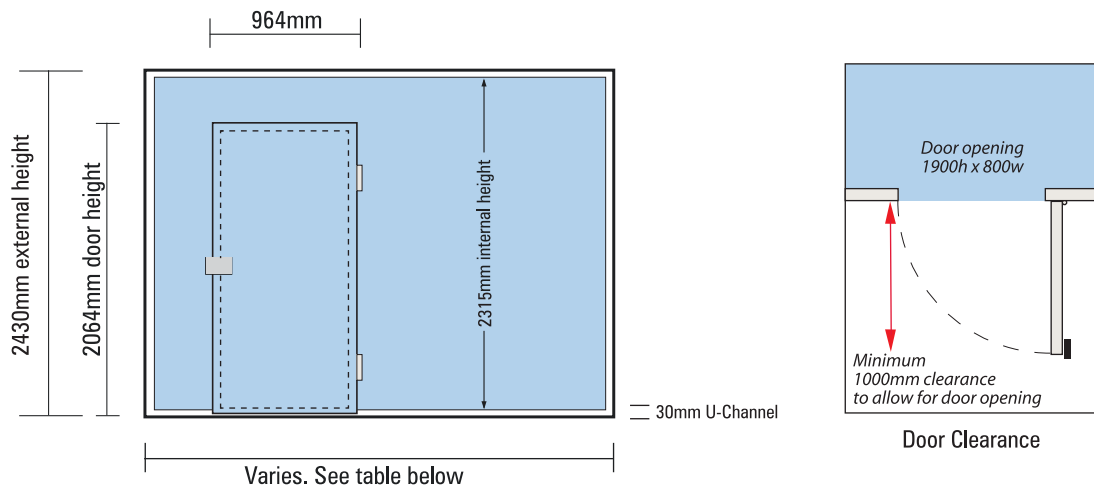


ASSEMBLY IN UNDER 3 HOURS

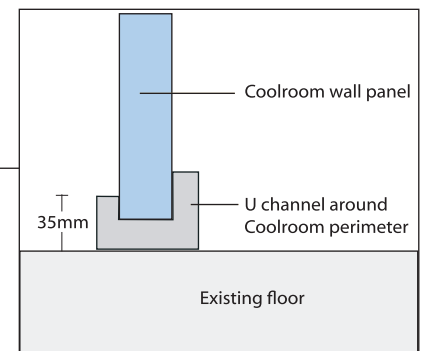
Assembly is done within the coolroom. This is perfect for full usage of room height whilst taking maximum advantage of the available space. The modules are assembled with cam locks consisting of a corrosion-proof cam and pin allowing quick and easy assembly within 3 hours.

Matrix II Modular Coolroom

WITHOUT FLOOR



Cam-lock alan key construction



Call **1300-BROMIC** for professional installation (POA) See page 52 for Coolroom Pre-Installation Checklist.
BROMIC can arrange a professional site survey in most Australian metro areas (POA)

WARRANTY	Matrix II Modular Coolroom WITHOUT Floor					
	5 yr PANELS ONLY					
	M2CR1814	M2CR1818	M2CR1826	M2CR2222	M2CR2626	M2CR3034
Bromic Part Number	3735510	3735511	3735512	3735513	3735514	3735515
External Width (mm) x Depth (mm)	1800 x 1400	1800 x 1800	1800 x 2600	2200 x 2200	2600 x 2600	3000 x 3400
Volume (cubic metre)	4.28m ³	5.71m ³	8.56m ³	8.92m ³	12.84m ³	21.8m ³
Internal height (mm)	2340	2340	2340	2340	2340	2340
External height (mm)	2430	2430	2430	2430	2430	2430
Panel Thickness (mm)	85	85	85	85	85	85
Door Opening (H x W)	1900 x 800	1900 x 800	1900 x 800	1900 x 800	1900 x 800	1900 x 800



Matrix II Modular Coolroom WITH FLOOR



Made in Europe



The Matrix II Cool room is ideal for small and large spaces and is the perfect solution when a refrigerator is no longer enough. Extremely efficient and versatile

Door

- High density 85mm polyurethane insulated door
- Wide door opening for easy access (door opening 1900mm x 800mm)
- Standard Right hinge. Reversible

General Room Information

- Room can be used for coolroom only
- Modules are fixed together with cam locks - no need to cut/screw or glue panels together
- Cam locks are protected against corrosion and secured inside high resistance pvc boxes
- Quick and easy assembly or dismantling if relocating with internal coving for easy cleaning
- Audible bell included
- White powder coated galvanised steel cladding is used on the vertical walls and roof
- 85mm Polyurethane panels

Floor

- Supplied complete with floor
- Floor is reinforced, foodsafe with a skin plate finish
- All you require is a flat, solid level surface
- Coving included

Optional extras (POA)

- Choice of Chiller refrigeration system - see page 50
- Shelving - see page 53
- Strip curtain (Product Code: 3735560)
- Installation (POA)



Hinge



Inside Latch



Inside safety latch



Outside latch and lock



Foodsafe floor,
door opening and door seal

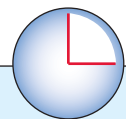


These rooms are not designed to be installed outdoors



**PORTABLE
RELOCATEABLE**

These rooms can be quickly and simply disassembled for transportation to another location

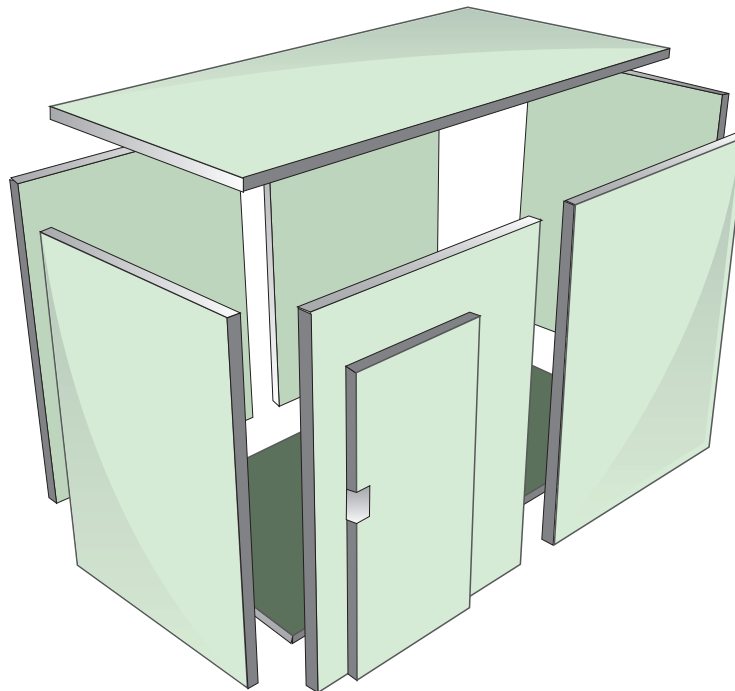
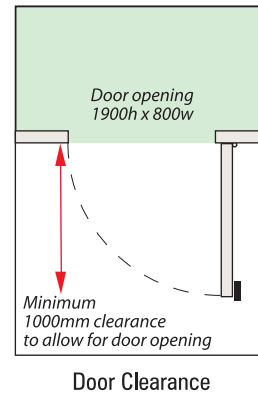
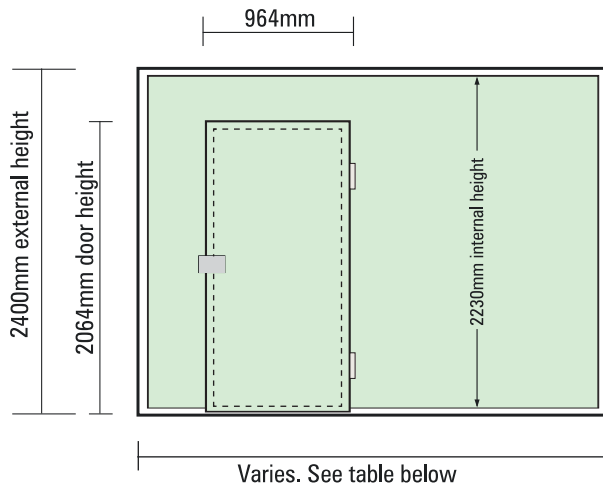


ASSEMBLY IN UNDER 3 HOURS

Assembly is done within the coolroom. This is perfect for full usage of room height whilst taking maximum advantage of the available space. The modules are assembled with cam locks consisting of a corrosion-proof cam and pin allowing quick and easy assembly within 3 hours.

Matrix II Modular Coolroom

WITH FLOOR



Cam-lock alan key
construction



Foodsafe floor,
door opening and door seal

Call **1300-BROMIC** for professional installation (POA) See page 52 for Coolroom Pre-Installation Checklist.
BROMIC can arrange a professional site survey in most Australian metro areas (POA)

WARRANTY		5 yr PANELS ONLY		Matrix II Modular Coolroom WITH Floor		
	M2CR1814F	M2CR1818F	M2CR1826F	M2CR2222F	M2CR2626F	M2CR3034F
Bromic Part Number	3735535	3735536	3735537	3735538	3735539	3735526
External Width (mm) x Depth (mm)	1800 x 1400	1800 x 1800	1800 x 2600	2200 x 2200	2600 x 2600	3000 x 3400
Volume (cubic metre)	4.28m³	5.71m³	8.56m³	8.92m³	12.84m³	21.8m³
Internal height (mm)	2230	2230	2230	2230	2230	2230
External height (mm)	2400	2400	2400	2400	2400	2400
Panel Thickness (mm)	85	85	85	85	85	85
Door Opening (H x W)	1900 x 800	1900 x 800	1900 x 800	1900 x 800	1900 x 800	1900 x 800



Matrix II Modular Freezer

WITH HEATED DOOR



Bell included



Internal coving included



Heated door included



Pressure release valve included



Made in Europe



The Matrix II Freezer room is ideal for small and large spaces and is the perfect solution when a refrigerator is no longer enough. Extremely efficient and versatile

Door

- High density 85mm polyurethane insulated door
- Wide door opening for easy access (door opening 1900mm x 800mm)
- Standard Right hinge. Reversible
- Heated door frame

General Room Information

- Includes pressure relief valve and heated door
- Modules are fixed together with cam locks - no need to cut/screw or glue panels together
- Cam locks are protected against corrosion and secured inside high resistance pvc boxes
- Quick and easy assembly or dismantling if relocating with internal coving for easy cleaning
- Audible bell included
- White powder coated galvanised steel cladding is used on the vertical walls and roof
- 85mm Polyurethane panels

Floor

- Supplied complete with skinplate floor
- Floor is reinforced and food safe
- All you require is a flat, solid level surface
- Coving included

Optional extras (POA)

- Freezer refrigeration system - see page 51
- Shelving - see page 53
- Strip curtain (Product Code: 3735560)
- Installation (POA)



NB: Contains electric 240volt heating element that must be connected by a licensed contractor



Hinge



Inside Latch



Inside safety latch



Foodsafe floor,
door opening and door seal



Outside latch and lock

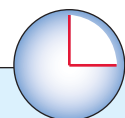


These rooms are not designed to be installed outdoors



**PORTABLE
RELOCATEABLE**

These rooms can be quickly and simply disassembled for transportation to another location



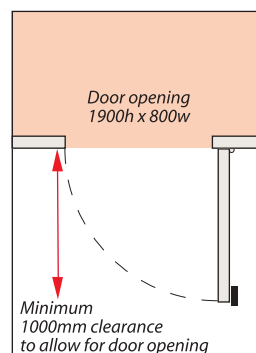
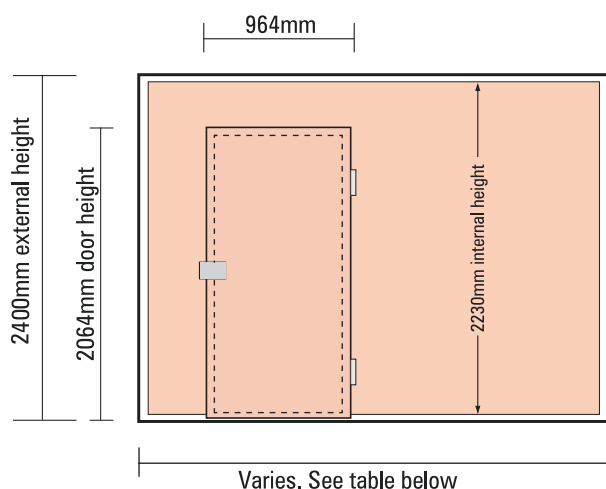
ASSEMBLY IN UNDER 3 HOURS

Assembly is done within the coolroom. This is perfect for full usage of room height whilst taking maximum advantage of the available space. The modules are assembled with cam locks consisting of a corrosion-proof cam and pin allowing quick and easy assembly within 3 hours.

See page 51 for matching "Refrigeration Unit to Freezer Room Size"

Matrix II Modular Freezer

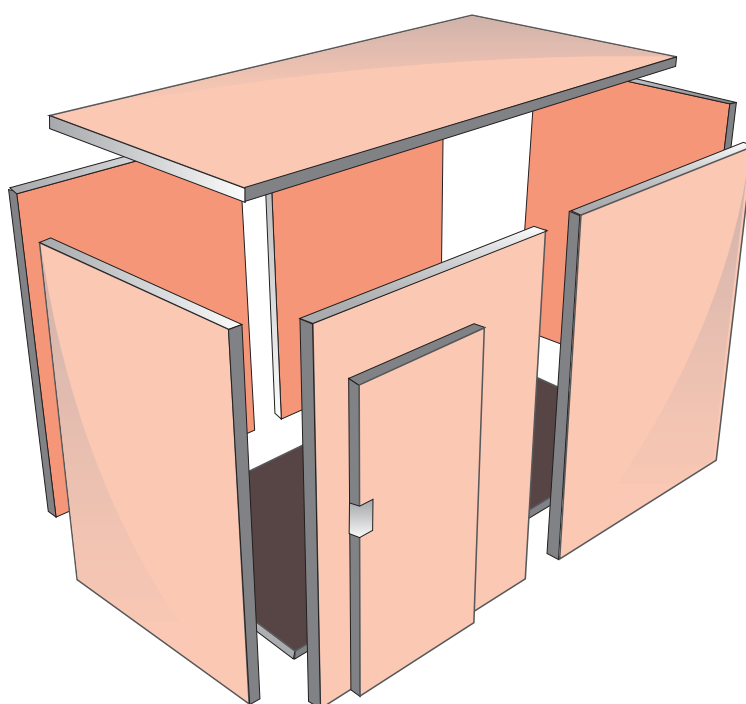
WITH HEATED DOOR



Door Clearance



Heated circuit around door ensures easy opening and closing



Cam-lock alan key construction



Foodsafe floor, door opening and door seal

Call **1300-BROMIC** for professional installation (POA) See page 52 for Coolroom Pre-Installation Checklist.
BROMIC can arrange a professional site survey in most Australian metro areas (POA)

WARRANTY	5 yr PANELS ONLY					
	Matrix II Modular FREEZER ROOM with Heated Door					
	M2FR1814F	M2FR1818F	M2FR1826F	M2FR2222F	M2FR2626F	M2FR3034F
Bromic Part Number	3735530	3735531	3735532	3735533	3735534	3735528
External Width (mm) x Depth (mm)	1800 x 1400	1800 x 1800	1800 x 2600	2200 x 2200	2600 x 2600	3000 x 3400
Volume (cubic metre)	4.28m ³	5.71m ³	8.56m ³	8.92m ³	12.84m ³	21.8m ³
Internal height (mm)	2230	2230	2230	2230	2230	2230
External height (mm)	2400	2400	2400	2400	2400	2400
Panel Thickness (mm)	85	85	85	85	85	85
Door Opening (H x W)	1900 x 800	1900 x 800	1900 x 800	1900 x 800	1900 x 800	1900 x 800

Selecting the correct REFRIGERATION SYSTEM for your COOLROOM

STEP 1: Select **WITHOUT FLOOR** or **WITH FLOOR**.

STEP 2: Select the Room Size column you require. (eg. 1.8 x 1.8m), noting the Room Size model number (eg. M2CR1818)

STEP 3: Select either **General** or **Heavy** usage.

STEP 4: Select the type of Motor required (eg. Slide In; Drop In; Split System or Wine Block)

STEP 5: Reading down the Room size column, find available Motor indicated by green tick ✓

USAGE GUIDELINES

GENERAL USAGE

Less than 10 room entries per day
Less than 75kg of product per cubic metre
Indoor application

HEAVY USAGE

10 or more room entries per day (maximum 40 openings)
75kg Or more of product per cubic metre
Indoor application

NB: Usage requires technical knowledge for selecting the correct refrigeration system.

WITHOUT FLOOR							
Room Size (All 2400mm in height)	1.8x1.4m	1.8x1.8m	1.8x2.6m	2.2x2.2m	2.6x2.6m	3.0 x 3.4m	
Coolroom Model No.	M2CR1814	M2CR1818	M2CR1826	M2CR2222	M2CR2626	M2CR3034	
GENERAL USAGE	Drop In Motor						
	MSB125T	✓	✓				
	MSB225N			✓	✓	✓	
	MSB225T					✓	
	Slide In Motor						
	MGM106	✓					
	MGM110		✓				
	MGM211			✓	✓		
	MGM213					✓	
	Split/Remote System Motor						
	MSP121T	✓					
	MSP221N		✓	✓	✓		
	MSP221T					✓	
	Wine Block						
	SLIDE IN	RCV102	✓	✓	✓	✓	
		RCV201					✓
		RCV202	For large rooms and cellars see page 58				
	SPLIT	RDV102	✓	✓	✓	✓	
		RDV201					✓
		RDV202	For large rooms and cellars see page 58				
HEAVY USAGE	Drop In Motor						
	MSB225N	✓	✓				
	MSB225T			✓	✓		
	MSB135N					✓	
	MSB135T					✓	
	Slide In Motor						
	MGM211	✓	✓				
	MGM213			✓	✓		
	MGM315					✓	
	MGM320					✓	
	Split/Remote System Motor						
	MSP221N	✓	✓				
	MSP221T			✓	✓		
	MSP135T					✓	

WITH FLOOR							
Room Size (All 2400mm in height)	1.8x1.4m	1.8x1.8m	1.8x2.6m	2.2x2.2m	2.6x2.6m	3.0 x 3.4m	
Coolroom Model No.	M2CR1814F	M2CR1818F	M2CR1826F	M2CR2222F	M2CR2626F	M2CR3034F	
GENERAL USAGE	Drop In Motor						
	MSB125T	✓	✓	✓	✓		
	MSB225N					✓	
	MSB135N					✓	
	Slide In Motor						
	MGM106	✓	✓				
	MGM110			✓	✓		
	MGM211					✓	
	MGM315					✓	
	Split/Remote System Motor						
	MSP121T	✓	✓				
	MSP221N			✓	✓	✓	
	MSP135T					✓	
	Wine Block						
	SLIDE IN	RCV102	✓	✓	✓	✓	
		RCV201					✓
		RCV202	For large rooms and cellars see page 58				
	SPLIT	RDV102	✓	✓	✓	✓	
		RDV201					✓
		RDV202	For large rooms and cellars see page 58				
HEAVY USAGE	Drop In Motor						
	MSB125T	✓					
	MSB225N		✓	✓	✓		
	MSB225T					✓	
	MSB135N					✓	
	Slide In Motor						
	MGM110	✓					
	MGM211		✓	✓	✓		
	MGM213					✓	
	MGM315					✓	
	Split/Remote System Motor						
	MSP221N	✓	✓				
	MSP221T			✓	✓	✓	
	MSP135T					✓	

Above charts serve as a guide only. Maximum ambient temperature: 45° C. WineBlock: 40° C. See page 52: Pre Installation Checklist.

Installation available in most Metro and major Regional areas subject to:

Flat and level surface - Clear and easy access installation point (including provision for unloading) - Provision of adequate ventilation and power (within 2m of site) - Additional charges may apply if lifting equipment is required
- Subject to site inspection by a licensed refrigeration technician and completion of Bromic Site Checklist - Call our Sales office to arrange a quotation.

Select the correct REFRIGERATION SYSTEM for your FREEZER ROOM

STEP 1: Select the Room Size column you require. (eg. 1.8 x 1.8m), noting the Room Size model number (eg. M2FR1818F)

STEP 2: Select either **General** or **Heavy** usage.

STEP 3: Select the type of Motor required (eg. Slide In; Drop In; Split System)

STEP 4: Reading down the Room size column, find available Motor indicated by green tick ✓

USAGE GUIDELINES

GENERAL USAGE

Less than 10 room entries per day
Less than 75kg of product per cubic metre
Indoor application

HEAVY USAGE

10 or more room entries per day (maximum 40 openings)
75kg or more of product per cubic metre
Indoor application

NB: Usage requires technical knowledge for selecting the correct refrigeration system.

FREEZER ROOM - with floor

Room Size (All 2400mm in height)	1.8x1.4m	1.8x1.8m	1.8x2.6m	2.2x2.2m	2.6x2.6m	3.0 x 3.4m
Coolroom Model No.	M2FR1814F	M2FR1818F	M2FR1826F	M2FR2222F	M2FR2626F	M2FR3034F

GENERAL USAGE

HEAVY USAGE

Drop In Motor

BSB125T	✓					
BSB225T		✓	✓	✓		
BSB135T					✓	✓

Slide In Motor

BGM218	✓					
BGM220		✓	✓	✓		
BGM320					✓	
BGM330						✓

Split/Remote System Motor

BSP221N	✓	✓				
BSP135N			✓	✓		
BSP135T					✓	✓

Drop In Motor

BSB225T	✓					
BSB135T		✓	✓	✓	✓	✓

Slide In Motor

BGM320	✓	✓				
BGM330			✓	✓	✓	✓

Split/Remote System Motor

BSP221N						
BSP135N	✓	✓				
BSP135T			✓	✓	✓	✓

BSB135T
BSB125T

BGM330
BGM218

BSP221N
BSP135T

BSB135T
BSB125T

BSB135T
BSB135T

BGM330
BGM320

BGM330
BGM218

BSP135T
BSP135T

BSP135T
BSP221N

Above charts serve as a guide only. Maximum ambient temperature = 45° C. See page 52: Pre Installation Checklist.

Installation available in most Metro and major Regional areas subject to:

Flat and level surface - Clear and easy access installation point (including provision for unloading) - Provision of adequate ventilation and power (within 2m of site) - Additional charges may apply if lifting equipment is required
- Subject to site inspection by a licensed refrigeration technician and completion of Bronic Site Checklist - Call our Sales office to arrange a quotation.

Coolroom/Freezer room Pre-installation Checklist

CUSTOMER DETAILS

Project/Customer name

Contact Name

Contact Number

PRODUCT DETAILS DETAILS

Room Type

Room Size

Floor Required

☐ YES ☐ NO

Refrigeration System

☐ Slide-in ☐ Drop-in ☐ Split/Remote

Model

Door Hinge

☐ Left ☐ Right

Is room under cover? ☐ YES ☐ NO

Shelving Required

☐ YES ☐ NO

☐ Standard

☐ Other (specify)

Freight

☐ BROMIC Carrier OR

☐ Nominate preferred Carrier

Delivery to:

Kerb-side

Into store (not standard- extra cost will be levied)

Comments

SITE INSPECTION DETAILS

Is a BROMIC installation required?

☐ YES ☐ NO

Required Installation date

NB. A minimum of 5 working days is required for all Bromic installations

Do you require a site survey?

☐ YES ☐ NO

Bromic recommends a site survey to confirm site suitability. Please contact Bromic on 1300 276 642 to arrange an authorised representative or agent (POA)

General

All boxes below must be marked YES or NO. Relevant information must be provided for installation to proceed

1. Has a floor plan & details of the store layout been provided?

☐ Must accompany this form

2. Is there adequate flat and level floor space for relevant room size?

☐ Floors that are NOT level or solid may adversely impact on room operation

3. Has the location of the door and refrigeration unit been determined? (ensure adequate clearance from other appliances eg. aircon units etc.)

☐ Mark on your diagram

4. Is there adequate clearance* height? (Please indicate height)

☐ Allow 2550mm for standard Slide in unit and 3100mm for drop in unit

5. Is there adequate clearance for door to open?

☐ Opens to the right (standard)

6. Is there adequate power? If NO, does customer have own electrician?

☐ Single phase 240V - 10,15 or 25(32) amp depending on unit size

7. Is there adequate ventilation?

☐ Condensor unit gives off heat - sufficient ventilation must be present to keep ambient room temp below 32°C at all times

8. WINEBLOCK ONLY

Has water inlet been installed for connection?

☐ YES ☐ NO Circle answer

9. SPLIT/REMOTE SYSTEMS

All Split/Remote systems require drainage.

Has drainage been provided?

☐ YES ☐ NO Circle answer

10. Have all the relevant approvals been received? eg. Land/Building owner, Building codes etc.

☐ Bromic is not responsible for any approvals

Use a separate sheet or graph paper to indicate position of where the modular room/s is to be located in relation to your site layout. Also show where the door and refrigeration unit are to be positioned.

ADDITIONAL REQUIREMENTS

Prices exclude GST

☐ Strip Curtain (Product Code: 3735560)

POA

☐ Other (Detail below)

DELIVERY/ INSTALLATION

To be completed for ALL MATRIX modular coolroom requirements

Install at:

Deliver to:

Note: We must have access to deliver at least one day prior to installation

Delivery Date:

Site Contact:

Phone number:

Special instructions:

AUTHORISATION

I accept that I have provided all the information contained herewith and will not hold BROMIC liable for information incorrectly provided.

Signature:

Name in full:

SHELVING Coolroom/Freezer room

(Shelving sold separately)

Bromic's modular shelving components allow you to organise your coolroom/freezer and thus optimise the available space. Available in a variety of shelf lengths to suit all our coolroom sizes, these shelf units are made from durable, rust proof zinc plated steel and can be assembled in minutes.

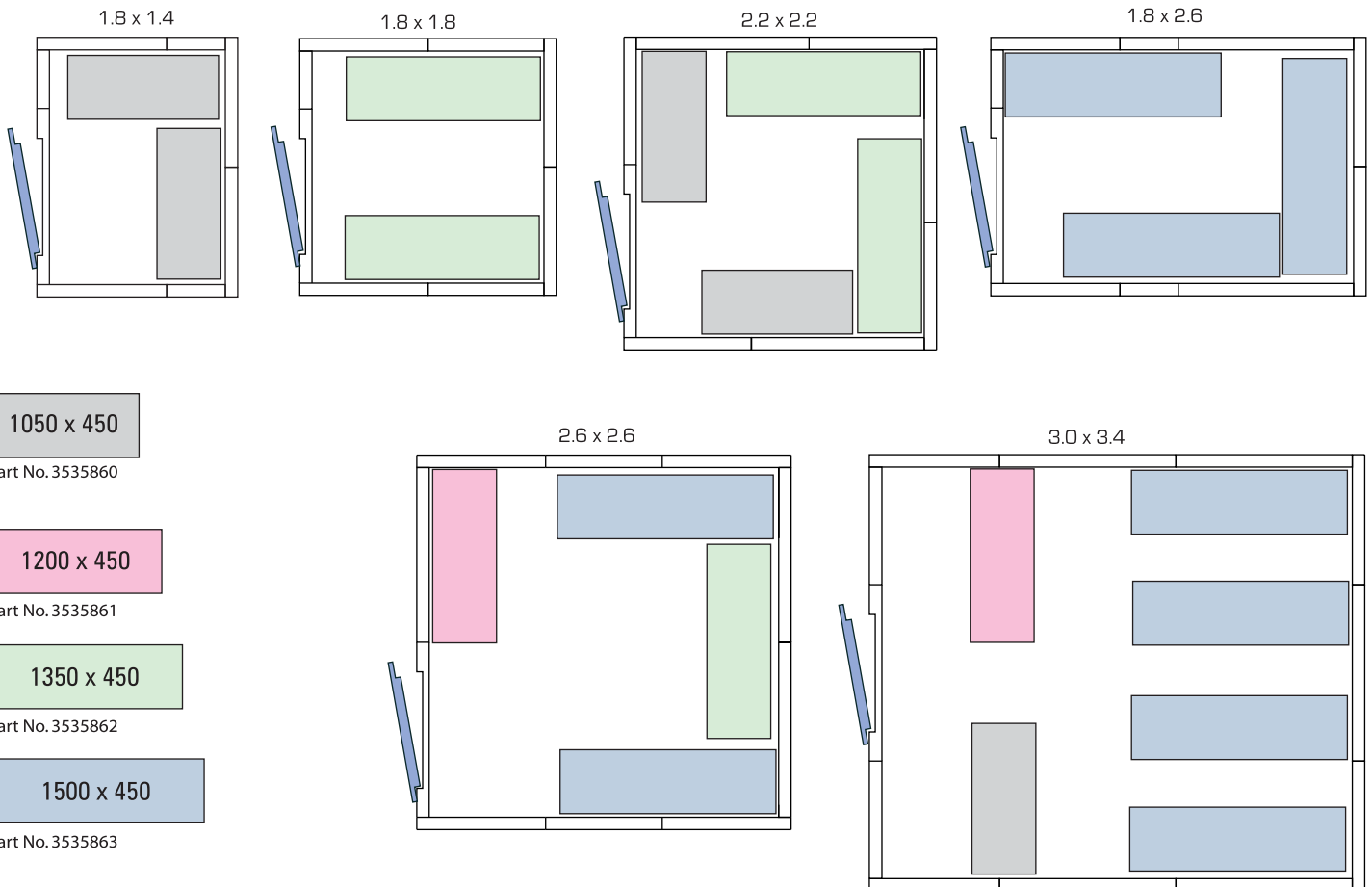
- Quick assembly and disassembly
- Easy to clean, food safe
- Rustproof
- Selection of shelf lengths
- 1800mm high - maximum use of interior space
- 120kg per metre load capacity
- Adjustable feet to ensure level

Each shelf unit
has 4 shelves



Typical shelf deployment in various sized Coolrooms/Freezer rooms

(other permutations are possible - guide only)



SHELVING - Coolroom / Freezer Room

Bromic Part Number	3535860	3535861	3535862	3535863
Dimensions(mm): Height	1800	1800	1800	1800
Length	1050	1200	1350	1500
Depth	450	450	450	450
Number of shelves	4	4	4	4
Shelf material	Steel	Steel	Steel	Steel